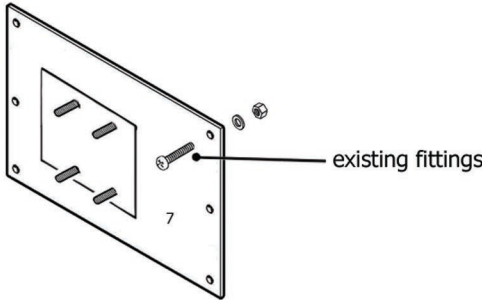


DOOR PLATE AND PISTON ASSEMBLY

Remove rear door trim.

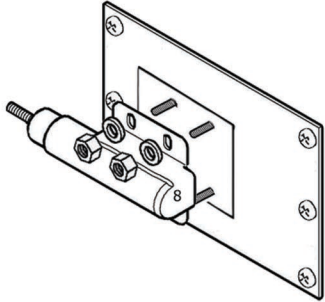
Remove existing carrier and retain bolts for fitting new door plate.

Fit new door plate (7) using original bolts



PLEASE NOTE THERE IS NO NEED TO DRILL WITH THIS MODEL

The piston (8) can now be fitted on the studs on the door plate using M8 washer x4 and M8 Nut Nylock x4 provided.



FINAL FITTING

Open door and wheel carrier together and draw the piston in to the slot in the wheel carrier frame. Ensure that the rubber washer (9) is located between the piston and carrier frame as shown.

Close the door and carrier, centralise piston bolt. Fully open door and check that the piston bolt is still in a central position. If the piston bolt is not central - realign the piston bracket on the slotted holes to suit.

When you are happy with the alignment fit steel washer (!0) and nut (11) and tighten until the rubber washer (9) is pinched.

Check that the carrier/door opens and closes satisfactorailly, fit locking nut (12) and tighten.

Tighten all remaining fittings. Refit any internal trim and replace spare road wheel.

PLEASE NOTE THE FOLLOWING :

To ensure that the mechanism works to it’s full potential the SWING AWAY 50 must be fitted squarely to the body and will require final adjustments to achieve this.

During assembly only “pinch tighten” bolts, on completion when a satisfactory fit is achieved all fastners will then need to be fully tightened.

Before drilling check that there are no cables or other obstructions in the effected area, as necessary carefully remove any internal trim.

Remove spare road wheel.

BOTTOM HINGE

Remove the two fixings, remove and discard grab handle existing nut plate and fixings.

Position the bottom hinge (1), locate the nut plates (2) and secure with the four M8 bolts and washers.

NOTE: The nut plates (2) go behind the rear cross member.

NOTE: To ensure that the wheel carrier fits squarely the upper and lower hinges should be an equal distance from the body edge.

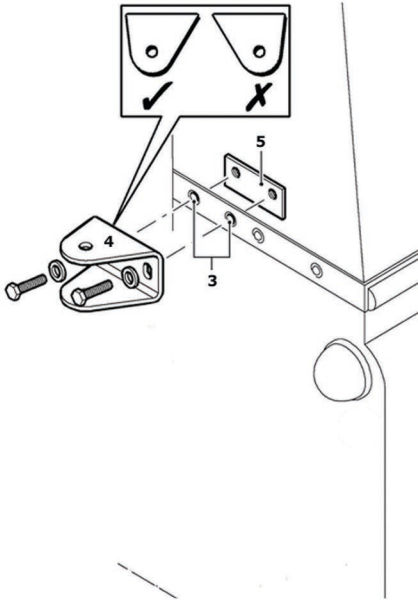
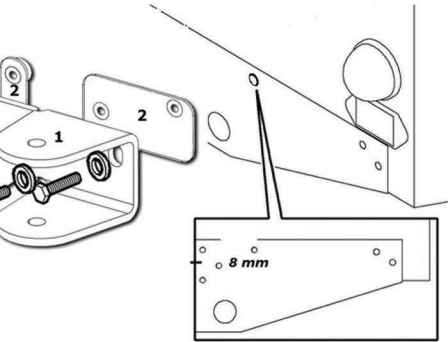
TOP HINGE

Remove the two existing rivets from the body capping and drill out the two holes (3) to 11mm for M10 Bolts.

NOTE: Some vehicles may have only one rivet in this location. (3) If this is the case,remove the rivet closest to the door edge,then use the top hinge bracket as a template to drill the second hole.

Position the top hinge (4) as shown, locate the nut plate (5) and secure with the two M10 bolts and washers.

NOTE: The nut plate (5) goes behind the body work, inside the vehicle.



214-SWCDEF

SWING AWAY 50

